

# EasyLED Hazardous Location 48" Linear LED Die Cast

FXHLV4A0Q

C1D2 • HAZARDOUS LOCATION • LINEAR LED



The FXHLV4A0Q Class 1, Division 2 Hazardous Location series wall and ceiling mount luminaire is available with clear lens and open door frame designed to replace HID lighting systems up to 400w MH or HPS. Typical lighting applications include industrial facilities, oil, gas, and auto service facilities. Mounting heights of 18 to 30 feet can be used based on light level and uniformity requirements.

## HOUSING:

Heavy-Duty Die Cast Aluminum Housing and Top Frame, with 1/2" Tapped Coin Plug Openings for Wiring Entrance Conduits.

## LISTING & RATINGS:

ETL Listed for Hazardous Locations Per UL844 as Follows:  
Class 1, Division 2 Groups A, B, C, D; T4 Temperature Rating  
Suitable for Wet Locations

## FINISH:

Platinum Powdercoat Finish Over a Chromate Conversion Coating. Custom Colors Available Upon Request.

## LENS:

Clear UV-Stabilized Polycarbonate Vandal-Resistant Lens

## MOUNTING OPTIONS:

Mount with Stainless Steel Adjustable Bracket or Yoke. Rated for 6 #12 AWG 90°C for Through Wiring.

## EASYLED LED:

Aluminum Boards

## WATTAGE:

112w: Array: 112w, System: 126w; (250w HID Equivalent)  
136w: Array: 136w, System: 152w;(400w HID Equivalent)

## DRIVER:

Electronic Driver, 120-277V, 50/60Hz or 347-480V, 50/60Hz; Less Than 20% THD and PF>0.90. Standard Internal Surge Protection 6kV. 0-10V Dimming Standard for a Dimming Range of 100% to 10%; Dimming Source Current is 150 Microamps.

## LIFESPAN:

L70>165,000 Hours

## WARRANTY:

5-Year Warranty for -25°C to +40°C Environment.

See Page 3 for Projected Lumen Maintenance Table.



Class 1, Division 2  
Groups A, B, C, D  
T4 Temperature Rating

<b>PROJECT INFORMATION:</b>	
Project Name:	Fixture Type:
Complete Catalog #:	Date:
Comments:	

FXLSolutions.com • (800) 533-2789 • info@FXLSolutions.com

# EasyLED Hazardous Location 48" Linear LED Die Cast

FXHLV4AOQ

C1D2 • HAZARDOUS LOCATION • LINEAR LED



We have custom and standard manufacturing options. Use this form to build your part number or reach out to our sales team for assistance.

## GET YOUR PRODUCTS FASTER WITH OUR QUICK SHIP PROGRAM

Multiple USA locations = 98-3-1 Quick Ship Program  
98% Fill Rate – 3 Day Lead Time – 1 Piece Minimum Order

### ORDER EXAMPLE

<u>FXHL4VAOQ</u>	<u>Optics</u> F	<u>136</u>	<u>Driver</u> U	<u>5K</u>	<u>Lens</u> C	<u>P</u>
Series		Wattage		CCT		Color

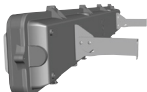
### ORDER CONFIGURATION

Series	Optics	Wattage	Driver	CCT	Lens	Color
FXHLV4AOQ=EasyLED Open Frame 48" Linear LED Die Cast	F=Wide	112=112w 136=136w	U=120-277V	4K=4000K 5K=5000K	C=Clear UV-Stabilized Polycarbonate Vandal-Resistant Lens	P=Platinum C=Custom (Consult Factory)
<b>FXHLV4AOQ</b>	<b>F</b>		<b>U</b>		<b>C</b>	

### Mounting Accessories

(Order Separately, Field Installed)

Options	Description
FXLVABRSS	Stainless Steel Adjustable Bracket, Set of Two
FXLV4AYSS	Stainless Steel Yokes for FXHLV4A, Includes Hardware.



FXLVABRSS



FXLV4AYSS

\*Shown Mounted

FXLSolutions.com • (800) 533-2789 • info@FXLSolutions.com

# EasyLED Hazardous Location 48" Linear LED Die Cast

FXHLV4AQ

C1D2 • HAZARDOUS LOCATION • LINEAR LED



## FXHLV4AQ PHOTOMETRIC DATA

Lumen Package	Optic	CCT	Spacing Criteria	Wattage (Catalog Logic)	
				112W (112)	136W (136)
				Input Watts	Delivered Lumens
FXHLV4AQ (Clear Lens)	Open Frame (110° x 110°)	4000K	1.32	126W	15,636
		5000K	1.28	152W	16,287

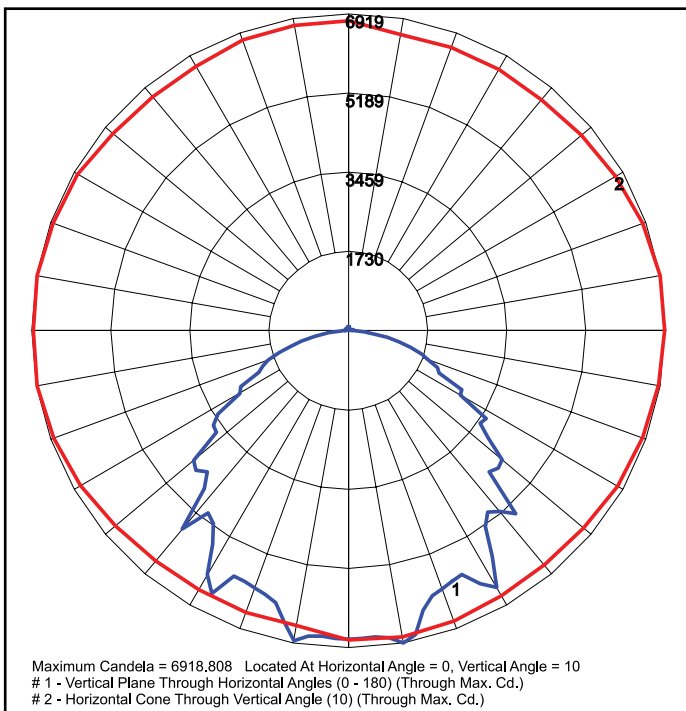
## FXHLV4AQ PROJECTED LUMEN MAINTENANCE

Data shown for 5000 CCT			Compare to MH			
TM-21-11	Input Watts	Initial	25,000 Hrs	50,000 Hrs	100,000 Hrs	Calculated LED Life
L70 Lumen Maintenance @ 25°C / 77°F	All wattages up to and including 152w	1.00	0.95	0.91	0.82	165,000
L80 Lumen Maintenance @ 40°C / 104°F		1.00	0.93	0.86	0.73	74,000

**NOTES:**

1. Projected per IESNA TM-21-11. Data references the extrapolated performance projections for the base model in a 25°C ambient, based on 10,000 hours of LED testing per IESNA LM-80-08.
2. Compare to MH box indicates suggested Light Loss Factor (LLF) to be used when comparing to Metal Halide (MH) systems.

## FXHLV4AQ DISTRIBUTION



FXHLV4AQF136U5KC  
Clear Lens

FXLSolutions.com • (800) 533-2789 • info@FXLSolutions.com

# EasyLED Hazardous Location 48" Linear LED Die Cast

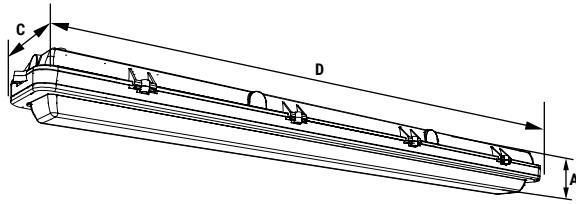
FXHLV4AQ

C1D2 • HAZARDOUS LOCATION • LINEAR LED



**FX**  
LIGHTING™  
A QSSI Company Since 1985

## FXHLV4AQ DIMENSIONAL DATA



### Dimensions

Width (D)	49" (1,247mm)
Length (C)	7" (178mm)
Height (A)	4" (102mm)

[FXLSolutions.com](http://FXLSolutions.com) • (800) 533-2789 • [info@FXLSolutions.com](mailto:info@FXLSolutions.com)

Information provided is subject to change. Please verify all details with FX Lighting. All values are designed to standard industry values when measured under laboratory conditions, and FX Lighting makes no warranty or guarantee, expressed or implied, that such performance will be obtained under end-use conditions.

REV. 08/14/23 4