

EasyLED Hazardous Location 24" Linear LED Die Cast

FXHLV2A0Q

C1D2 • HAZARDOUS LOCATION • LINEAR LED



The FXHLV2A0Q Class 1, Division 2 Hazardous Location series wall and ceiling mount luminaire is available with clear lens and open door frame designed to replace HID lighting systems from 175w to 250w MH or HPS. Typical lighting applications include industrial facilities, oil, gas, and auto service facilities. Mounting heights of 12 to 25 feet can be used based on light level and uniformity requirements.

HOUSING:

Heavy-Duty Die Cast Aluminum Housing and Top Frame, with 1/2" Tapped Coin Plug Openings for Wiring Entrance Conduits.

LISTING & RATINGS:

ETL Listed for Hazardous Locations Per UL844 as Follows:
Class 1, Division 2 Groups A, B, C, D; T4 Temperature Rating
Suitable for Wet Locations

FINISH:

Platinum Powdercoat Finish Over a Chromate Conversion Coating. Custom Colors Available Upon Request.

LENS:

Clear UV-Stabilized Polycarbonate Vandal-Resistant Lens

MOUNTING OPTIONS:

Mount with Stainless Steel Adjustable Bracket or Yoke. Rated for 6 #12 AWG 90°C for Through Wiring.

EASYLED LED:

Aluminum Boards

WATTAGE:

47w: Array: 47w, System: 57.8w; (175w HID Equivalent)
66w: Array: 66w, System: 77.3w; (250w HID Equivalent)

DRIVER:

Electronic Driver, 120-277V, 50/60Hz or 347-480V, 50/60Hz; Less Than 20% THD and PF>0.90. Standard Internal Surge Protection 6kV. 0-10V Dimming Standard for a Dimming Range of 100% to 10%; Dimming Source Current is 150 Microamps.

LIFESPAN:

L70>138,000 Hours

WARRANTY:

5-Year Warranty for -25°C to +40°C Environment.

See Page 3 for Projected Lumen Maintenance Table.



Class 1, Division 2
Groups A, B, C, D
T4 Temperature Rating

PROJECT INFORMATION:	
Project Name:	Fixture Type:
Complete Catalog #:	Date:
Comments:	

FXLSolutions.com • (800) 533-2789 • info@FXLSolutions.com

EasyLED Hazardous Location 24" Linear LED Die Cast

FXHLV2A0Q

C1D2 • HAZARDOUS LOCATION • LINEAR LED



We have custom and standard manufacturing options. Use this form to build your part number or reach out to our sales team for assistance.

GET YOUR PRODUCTS FASTER WITH OUR QUICK SHIP PROGRAM

Multiple USA locations = 98-3-1 Quick Ship Program
98% Fill Rate – 3 Day Lead Time – 1 Piece Minimum Order

ORDER EXAMPLE

<u>FXHL2VA0Q</u>	<u>Optics</u> F	<u>66</u>	<u>Driver</u> U	<u>5K</u>	<u>Lens</u> C	<u>P</u>
Series		Wattage		CCT		Color

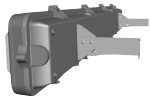
ORDER CONFIGURATION

Series	Optics	Wattage	Driver	CCT	Lens	Color
FXHLV2A0Q=EasyLED Open Frame 24" Linear LED Die Cast	F=Wide	47=47w 66=66w	U=120-277V	4K=4000K 5K=5000K	C=Clear UV-Stabilized Polycarbonate Vandal-Resistant Lens	P=Platinum C=Custom (Consult Factory)
FXHLV2A0Q	F		U		C	

Mounting Accessories

(Order Separately, Field Installed)

Options	Description
FXLVABRSS	Stainless Steel Adjustable Bracket, Set of Two
FXLV2AYSS	Stainless Steel Yokes for FXHLV2A, Includes Hardware.



FXLVABRSS*



FXLV2AYSS*

*Shown Mounted

FXLSolutions.com • (800) 533-2789 • info@FXLSolutions.com

EasyLED Hazardous Location 24" Linear LED Die Cast

FXHLV2AOQ

C1D2 • HAZARDOUS LOCATION • LINEAR LED



FXHLV2AOQ PHOTOMETRIC DATA

		Wattage (Catalog Logic)		47W (47)	66W (1X66)
		Input Watts		57.8W	77.3W
Lumen Package	Optic	CCT	Spacing Criteria	Delivered Lumens	
FXHLV2AQ (Clear Lens)	Open Frame (110° x 110°)	4000K	1.22	7,017	9,882
		5000K	1.22	7,309	10,294

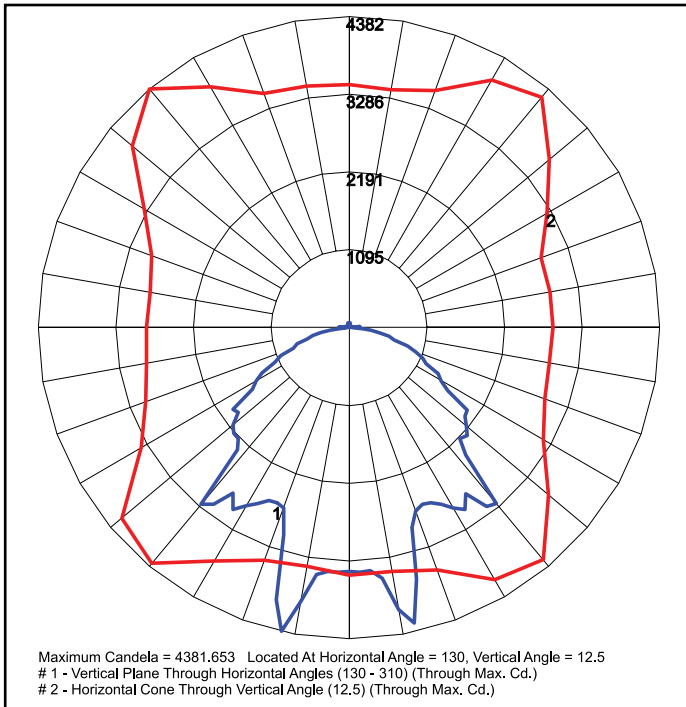
FXHLV2AOQ PROJECTED LUMEN MAINTENANCE

Data shown for 5000 CCT		Compare to MH					Calculated LED Life
TM-21-11	Input Watts	Initial	25,000 Hrs	50,000 Hrs	100,000 Hrs		
L70 Lumen Maintenance @ 25°C / 77°F	All wattages up to and including 77w	1.00	0.95	0.89	0.78	138,000	
L80 Lumen Maintenance @ 40°C / 104°F		1.00	0.92	0.84	0.68	62,000	

NOTES:

1. Projected per IESNA TM-21-11. Data references the extrapolated performance projections for the base model in a 25°C ambient, based on 10,000 hours of LED testing per IESNA LM-80-08.
2. Compare to MH box indicates suggested Light Loss Factor (LLF) to be used when comparing to Metal Halide (MH) systems.

FXHLV2AOQ DISTRIBUTION



FXHLV2AOQF66U5KC
Clear Lens

FXLSolutions.com • (800) 533-2789 • info@FXLSolutions.com

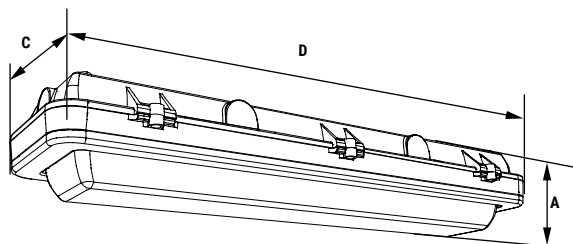
EasyLED Hazardous Location 24" Linear LED Die Cast

FXHLV2AOQ

C1D2 • HAZARDOUS LOCATION • LINEAR LED



FXHLV2AOQ DIMENSIONAL DATA



Dimensions

Width (D)	24 $\frac{1}{2}$ " (614mm)
Length (C)	7" (178mm)
Height (A)	4" (102mm)

FXLSolutions.com • (800) 533-2789 • info@FXLSolutions.com

Information provided is subject to change. Please verify all details with FX Lighting. All values are designed to standard industry values when measured under laboratory conditions, and FX Lighting makes no warranty or guarantee, expressed or implied, that such performance will be obtained under end-use conditions.

REV. 08/14/23 4