

# Internally Mounted Microwave Motion Sensor

FXP17123

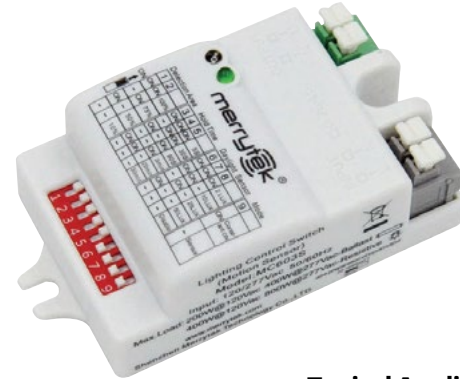
SENSOR & ACCESSORIES SERIES • MICROWAVE MOTION SENSOR



The FXP17123 Microwave active motion detector with a 5.8GHz HF system provides a wide range of occupancy control for ceiling, wall and pole mounted luminaires. Motion can be detected through plastic, glass and thin non-metallic materials. The sensors provide energy savings when programmed with up to two step switching functions. The sensor offers selectable range settings for heights up to 20 feet.

## Features

- Automatic switching when used in combination with LED drivers.
- Motion ON – Vacant OFF; Vacant – Time out then OFF; or Vacant – Never OFF.
- Multiple vacancy and time delay settings available.
- Built-in daylight sensor that limits motion ON command when selected ambient light level is exceeded.
- Factory-Installed OPTION available in a wide variety of luminaires.
- Multiple Detection Area settings up to 20 feet mounting height and up to 30 feet in diameter.



## Typical Applications

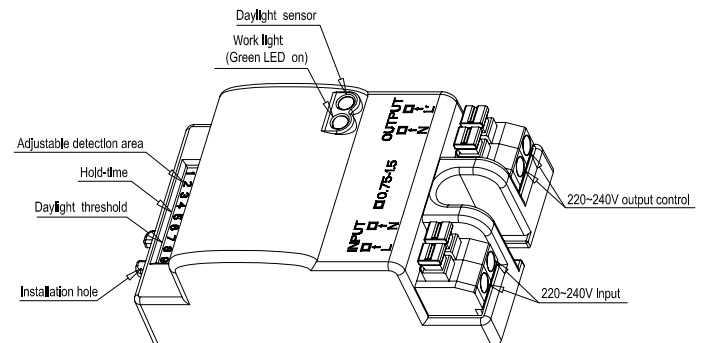


Sensor Mounts Behind Lens in FXVN55Q.

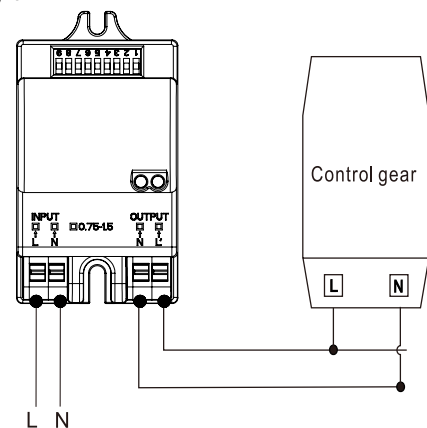
## Electrical Specifications:

OPERATING VOLTAGE	120~277Vac, 50Hz/60Hz
RATED CAPACITIVE LOAD	120V@400W; 277V@800W
HF SYSTEM	5.8GHz ± 75MHz, ISM wave band
TRANSMITTING POWER	<0.5mW
POWER CONSUMPTION	≤0.5W(Standby)
DETECTION ZONE	Max.(D x H): 30ft x 20ft
DETECTION SENSITIVITY	10% / 50% / 75% / 100%
HOLD TIME	5s / 30s / 90s / 3min / 20min / 30min
DAYLIGHT SENSOR	2lux / 10lux / 25lux / 50lux / Disable
MOUNTING HEIGHT	20 feet Max.
MOTION DETECTION	2-10 feet/s
DETECTION ANGLE	150°(Vertical), 360°(Horizontal)
OPERATING TEMPERATURE	-20°C to 60°C
IP RATING	IP20

## Features



## Wiring Diagram



FXLSolutions.com • (800) 533-2789 • info@FXLSolutions.com

# Internally Mounted Microwave Motion Sensor

FXP17123

SENSOR & ACCESSORIES SERIES • MICROWAVE MOTION SENSOR



## Programming Settings

ON ↑ [Switch]		1	2	
	I	ON	ON	100%
	II	-	ON	75%
	III	ON	-	50%
	IV	-	-	10%

### Detection area

Detection area can be adjusted by selecting the combination on the DIP switches to fit coverage for each application.

ON ↑ [Switch]		3	4	5	
	I	ON	ON	ON	5s
	II	-	ON	ON	30s
	III	ON	-	ON	90s
	IV	-	-	ON	3min
	V	ON	ON	-	20min
	VI	-	-	30min	

### Hold time

Refers to the time period the luminaire remains at 100% illumination after vacancy (no motion detected).

ON ↑ [Switch]		6	7	8	
	I	ON	ON	ON	2lux
	II	ON	ON	-	10lux
	III	-	ON	-	25lux
	IV	ON	-	-	50lux
	V	-	-	Disable	

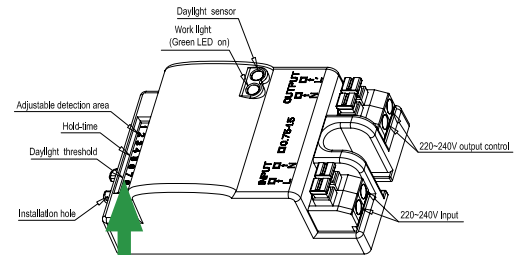
### Daylight sensor – BLOCKS Motion ON Command when light is present

The sensor can be set to only allow the luminaire to execute a Motion ON Command below a defined ambient brightness threshold. When set to disable mode, the motion sensor will execute ON Command when motion is detected regardless of ambient light level. SETTINGS: 2lux, 10lux, 25lux, 50lux, Disabled. Note that daylight sensor is NOT an ON-OFF device.

ON ↑ [Switch]		9	
	I	ON	Constant ON
	II	-	Sensor

### Stand-by dimming level

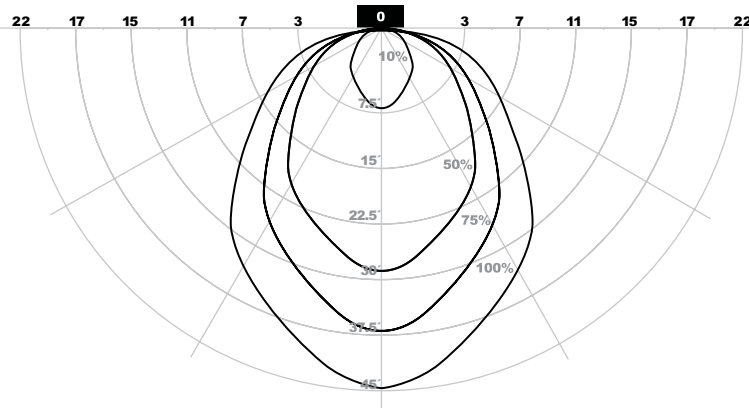
When set to "Constant ON" the microwave sensor function is inactive - fixture will be ON when feed circuit is ON.



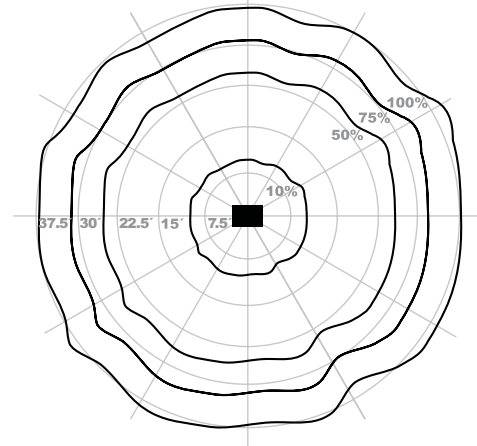
Programming Dip Switches

## Detection Diagrams

Vertical Cross-Section



Horizontal Distribution



FXLSolutions.com • (800) 533-2789 • info@FXLSolutions.com

# Internally Mounted Microwave Motion Sensor

FXP17123

SENSOR & ACCESSORIES SERIES • MICROWAVE MOTION SENSOR



## Factory-Installed FXP17123 Sensor Ordering Information

All fixtures that can accept the FXP17123 have it listed in the Options column in the fixture's specification sheet ordering matrix:

**S4:** Internal factory-installed sensor

**S43:** Factory-installed sensor using the FXACCHSG3 housing shown below

**EasyLED Low Profile Large Surface**  
FXVN44Q

SOFTLED • HARSH ENVIRONMENTS • SURFACE MOUNT

---

We have custom and standard manufacturing options. Use this form to build your part number or reach out to our sales team for assistance.

**GET YOUR PRODUCTS FASTER WITH OUR QUICK SHIP PROGRAM**  
Multiple USA Locations • 98-31 Quick Ship Program  
98% Fill Rate • 3 Day Lead Time • 1 Piece Minimum Order

ORDER EXAMPLE

FXVN44Q
Optics: F
1X45
Driver: U
5K
Lens: LP
Z
Options: SP

Series
Wattage
CCT
Color

**ORDER CONFIGURATION**

Series	Optics	Wattage	Driver	CCT	Lens	Color	Options
FXVN44Q	F	1X45			LP		<ul style="list-style-type: none"> <li>S4 - Cast Sensor</li> <li>S43 - Cast Sensor</li> <li>S44 - Cast Sensor</li> <li>S45 - Cast Sensor</li> <li>S46 - Cast Sensor</li> <li>S47 - Cast Sensor</li> <li>S48 - Cast Sensor</li> <li>S49 - Cast Sensor</li> <li>S50 - Cast Sensor</li> <li>S51 - Cast Sensor</li> <li>S52 - Cast Sensor</li> <li>S53 - Cast Sensor</li> <li>S54 - Cast Sensor</li> <li>S55 - Cast Sensor</li> <li>S56 - Cast Sensor</li> <li>S57 - Cast Sensor</li> <li>S58 - Cast Sensor</li> <li>S59 - Cast Sensor</li> <li>S60 - Cast Sensor</li> <li>S61 - Cast Sensor</li> <li>S62 - Cast Sensor</li> <li>S63 - Cast Sensor</li> <li>S64 - Cast Sensor</li> <li>S65 - Cast Sensor</li> <li>S66 - Cast Sensor</li> <li>S67 - Cast Sensor</li> <li>S68 - Cast Sensor</li> <li>S69 - Cast Sensor</li> <li>S70 - Cast Sensor</li> <li>S71 - Cast Sensor</li> <li>S72 - Cast Sensor</li> <li>S73 - Cast Sensor</li> <li>S74 - Cast Sensor</li> <li>S75 - Cast Sensor</li> <li>S76 - Cast Sensor</li> <li>S77 - Cast Sensor</li> <li>S78 - Cast Sensor</li> <li>S79 - Cast Sensor</li> <li>S80 - Cast Sensor</li> <li>S81 - Cast Sensor</li> <li>S82 - Cast Sensor</li> <li>S83 - Cast Sensor</li> <li>S84 - Cast Sensor</li> <li>S85 - Cast Sensor</li> <li>S86 - Cast Sensor</li> <li>S87 - Cast Sensor</li> <li>S88 - Cast Sensor</li> <li>S89 - Cast Sensor</li> <li>S90 - Cast Sensor</li> <li>S91 - Cast Sensor</li> <li>S92 - Cast Sensor</li> <li>S93 - Cast Sensor</li> <li>S94 - Cast Sensor</li> <li>S95 - Cast Sensor</li> <li>S96 - Cast Sensor</li> <li>S97 - Cast Sensor</li> <li>S98 - Cast Sensor</li> <li>S99 - Cast Sensor</li> <li>S100 - Cast Sensor</li> </ul>

**Replacement Parts**  
(Order Separately, Field Installed)

Part Number	Description
FXP17123	Internal Microwave Sensor with Stem for Mounting Height of 4" (104mm)
FXP17123	Internally Mounted Microwave Cast Sensor for Mounting Height of 4" (104mm)
FXP17123	Internally Mounted Microwave Cast Sensor for Mounting Height of 5" (134mm)

For Replacement Battery Backup, see the FX Lighting LED Battery Backup Specification Sheet.

**Options Column**

FXLSolutions.com • (800) 533-2789 • info@FXLSolutions.com

Information provided is subject to change. Please verify all details with FX Lighting. All values are designed to standard industry values when measured under laboratory conditions, and FX Lighting makes no warranty or guarantee, expressed or implied, that such performance will be obtained under end-use conditions. REV: 9/18/19 4/8 2

## Mounting Accessories

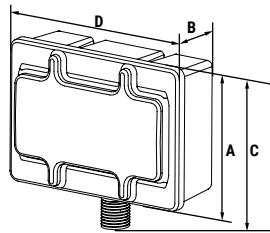
### FXACCHSG2

Die Cast Sensor Box with 1/2" offset stem and polycarbonate cover. Use to mount sensor to fixtures with 1/2" threaded aperture, or remote mount using 1/2" threaded conduit. See FXACCHSG2 Spvification Sheet for complete details and ordering information.



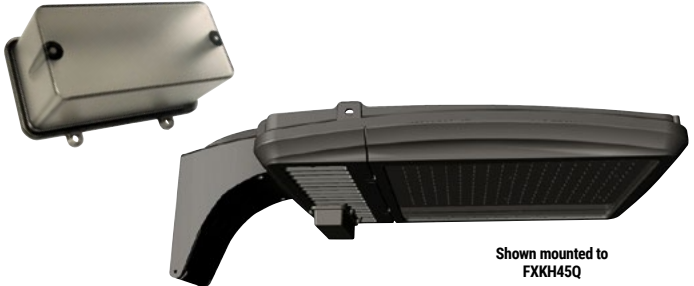
**Dimensions**

Width (D)	5 1/2" (144mm)
Depth (B)	2 1/2" (67mm)
Height 1 (A)	4" (104mm)
Height 2 (C)	5" (134mm)



### FXACCHSG3

Bronze UV-Stabilized Polycarbonate Housing for installation of sensors. Includes sensor bracket and gasket. Automatically included when the S23 Sensor option is listed in the Options column of the fixture order matrix.



FXLSolutions.com • (800) 533-2789 • info@FXLSolutions.com

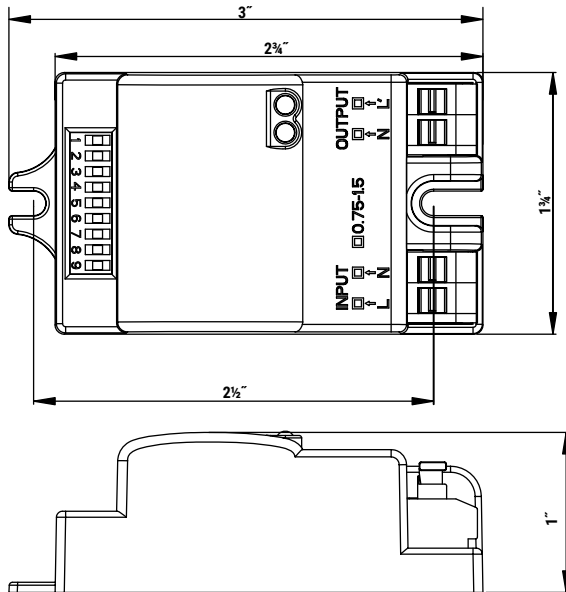
# Internally Mounted Microwave Motion Sensor

FXP17123

SENSOR & ACCESSORIES SERIES • MICROWAVE MOTION SENSOR



## FXP17123 DIMENSIONAL DATA



FXLSolutions.com • (800) 533-2789 • info@FXLSolutions.com

Information provided is subject to change. Please verify all details with FX Lighting. All values are designed to standard industry values when measured under laboratory conditions, and FX Lighting makes no warranty or guarantee, expressed or implied, that such performance will be obtained under end-use conditions.

REV. ###/###/### 4