

EasyLED PowerBolt High Bay

FXHB55Q



POWERBOLT • HIGH BAY

The FXHB55Q EasyLED PowerBay High Bay is designed for high ceiling industrial applications up to 80 feet that require maximum delivered footcandles with low maintenance and long life. The fixture is available in wide and narrow beam optics with a choice of lenses designed to replace HID lighting systems up to 1500w MH. Typical applications are high ceiling industrial, manufacturing, military and large aircraft hangar facilities. Suitable for 40 to 80 foot mounting heights based on light level and uniformity requirements.

HOUSING:

Die Cast Aluminum Housing with External Heat Sinks for Cooler Operating Temperatures. Includes 4" Stem. Maximum Stem Length: 30 Feet.

LISTING & RATINGS:

ETL: Listed for Damp Locations, ANSI/UL 1598, 8750 (Lens Gasket Use Required.)
IP65 Sealed LED Compartment.

FINISH:

White Powdercoat Finish Over a Chromate Conversion Coating. Custom Colors Available Upon Request.

LENS:

Tempered Clear Flat Glass Lens, UV-Stabilized Polycarbonate Drop Lens, Acrylic Drop Lens, Acrylic Conical Lens.

MOUNTING OPTIONS:

Mount with Included 4' Chains.

EASYLED LED:

Aluminum Boards

WATTAGE:

Array: 546w, System: 592w; (Up to 1,500w HID Equivalent)

DRIVER

Electronic Driver, 120-277V, 50/60Hz or 347-480V, 50/60Hz; Less Than 20% THD and PF>0.90. Standard Internal Surge Protection 6kV. 0-10V Dimming Standard for a Dimming Range of 100% to 10%; Dimming Source Current is 150 Microamps.

CONTROLS:

Fixtures Ordered with Factory-Installed Photocell or Motion Sensor Controls are Internally Wired for Switching and/or 1-10V Dimming Within the Housing. Remote Direct Wired Interface of 1-10V Dimming is Not Implied and May Not Be Available, Please Consult Factory. Fixtures are Tested with FX Lighting Controls and May Not Function Properly With Controls Supplied By Others. Fixtures are NOT Designed for Use with Line Voltage Dimmers.

LIFESPAN:

L70>299,000 Hours

WARRANTY:

5-Year Warranty for -40°C to +50°C Environment.

See Page 3 for Projected Lumen Maintenance Table.



Microwave Sensor
Factory Installed "M3" Option
(120-277V Only)

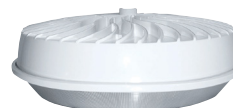
FXHB55Q LENS OPTIONS



FXHB55Q Shown with Tempered
Clear Flat Glass Lens (G)



FXHB55Q Shown with
Acrylic Conical Lens (C)



FXHB55Q Shown with
Acrylic Drop Lens (D)



FXHB55Q Shown with UV-Stabilized
Polycarbonate Drop Lens (B)



PROJECT INFORMATION:

Project Name:	Fixture Type:
Complete Catalog #:	Date:
Comments:	

FXLSolutions.com • (800) 533-2789 • info@FXLSolutions.com

EasyLED PowerBolt High Bay

FXHB55Q



POWERBOLT • HIGH BAY

We have custom and standard manufacturing options. Use this form to build your part number or reach out to our sales team for assistance.

GET YOUR PRODUCTS FASTER WITH OUR QUICK SHIP PROGRAM

Multiple USA locations = 98-3-1 Quick Ship Program
98% Fill Rate – 3 Day Lead Time – 1 Piece Minimum Order

ORDER EXAMPLE

FXHB55Q
Series
F
Optics
2X273
Wattage
U
Driver
5K
CCT
G
Lens
W
Color
SP
Options

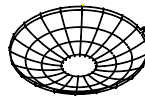
ORDER CONFIGURATION

Series	Optics	Wattage	Driver	CCT	Lens	Color	Options
FXHB55Q=EasyLED PowerBay Highbay	F=Wide I=Narrow Beam* *5K, Clear Flat Glass Lens Only	2X273=546w	U=120-277V H=347-480V	4K=4000K 5K=5000K	G=Clear Flat Glass Lens C=Acrylic Conical Lens D=Acrylic Drop Lens B=UV-Stabilized Polycarbonate Drop Lens	W=White C=Custom (Consult Factory)	SF=Single Fuse* DF=Double Fuse* SP=Surge Protection M3=Microwave Sensor for Mounting Heights of 20 Feet or Above.* CP6120W=6' White Cord, 3 Wire, L5-15P Twist-Lock Plug CP6277W=6' White Cord, 3 Wire, L7-15P Twist-Lock Plug C6600B=6' Black Cord, STW, 600VAC, 3 Wire, Leads C6600W=6' White Cord, STW, 600VAC, 3 Wire, Leads C4600B=4' Black Cord, SEOW, 600VAC, 3 Wire, Leads *120-277V Models Only.
FXHB55Q	F	2X273					

Accessories

(Order Separately, Field Installed)

Options	Description
FXHBR22WG	Wire Guard for Use with Flat Glass Lenses. FXHB55Q Requires Two.
FXCPSC	Safety Cable, 3' Steel Cable with Clear Vinyl Coating, Steel Eye & Loop Ends.



FXHBR22WG



FXCPSC

Replacement Parts

(Order Separately, Field Installed)

Options	Description
FXHBGL22	22" Tempered Clear Flat Glass Lens
FXHBCL22	22" LexaLite Clear Prismatic Acrylic Conical Lens. UV Stabilized, High-Efficiency Operation in General Applications.
FXHBDL22	22" LexaLite Clear Prismatic Acrylic Drop Lens. UV Stabilized, High-Efficiency Operation in General Applications.
FXHBPC22	22" UV-Stabilized Polycarbonate Drop Lens.
FXHBCB22	22" Clampband
FXP17116	Microwave Sensor for Mounting Heights of 20 Feet or Above (120-277V Only).



FXP17116

EasyLED PowerBolt High Bay

FXHB55Q



POWERBOLT • HIGH BAY

FXHB55Q PHOTOMETRIC DATA

					Wattage (Catalog Logic)	546W (2X273)
					Input Watts	592W
Lumen Package	Lens	Optics	CCT	Spacing Criteria	Delivered Lumens	
FXHB55Q	Clear Glass (G)	Type V	4000K	1.34	59,342	
	Clear Glass (G)	Type V	5000K	1.34	64,885	
	Clear Glass (G)	Narrow Beam	4000K	0.54	-	
	Clear Glass (G)	Narrow Beam	5000K	0.54	67,081	

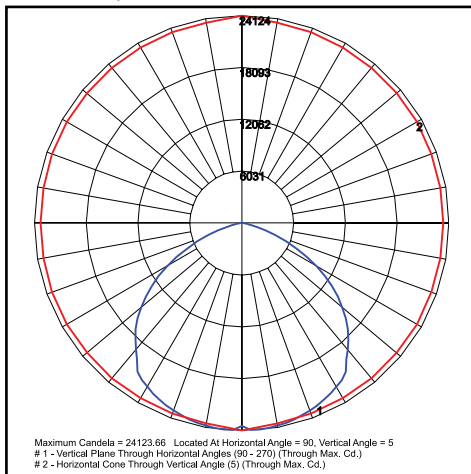
FXHB55Q PROJECTED LUMEN MAINTENANCE

Data shown for 5000 CCT			Compare to MH			
TM-21-11	Input Watts	Initial	25,000 Hrs	50,000 Hrs	100,000 Hrs	Calculated LED Life
L70 Lumen Maintenance @ 25°C / 77°F	296	1.00	0.97	0.95	0.90	299,000
L70 Lumen Maintenance @ 50°C / 122°F		1.00	0.97	0.94	0.88	172,000
L80 Lumen Maintenance @ 40°C / 104°F		1.00	0.97	0.93	0.86	148,000

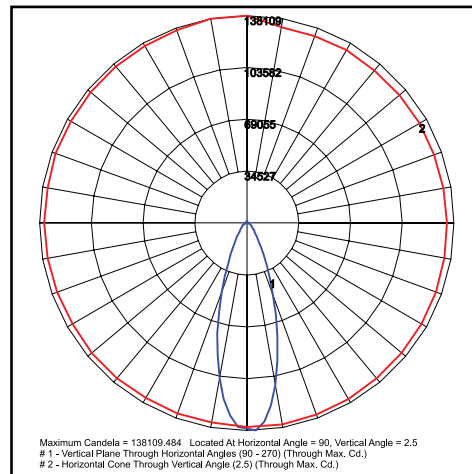
NOTES:

- Projected per IESNA TM-21-11. Data references the extrapolated performance projections for the base model in a 25°C ambient, based on 10,000 hours of LED testing per IESNA LM-80-08.
- Compare to MH box indicates suggested Light Loss Factor (LLF) to be used when comparing to Metal Halide (MH) systems.

FXHB55Q DISTRIBUTION



FXHB55Q2X273U5KG
Clear Glass Lens



FXHB55Q2X273U5KG
Clear Glass Lens

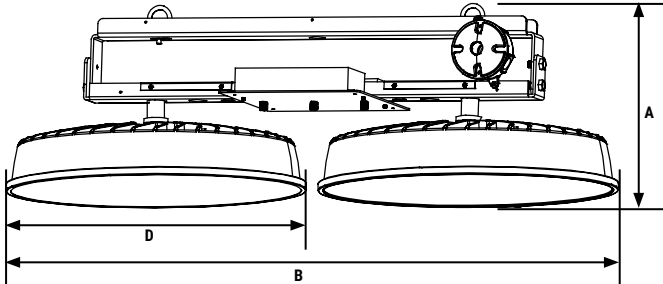
EasyLED PowerBolt High Bay

FXHB55Q



POWERBOLT • HIGH BAY

FXHB55Q DIMENSIONAL DATA



FXHB55Q with Clear Flat Glass Lens Dimensions

Diameter (D)	22 $\frac{1}{4}$ " (565mm)
Height (A)	13 $\frac{7}{8}$ " (352mm)
Length (B)	46 $\frac{1}{2}$ " (1,186mm)

FXLSolutions.com • (800) 533-2789 • info@FXLSolutions.com