

EasyLED Mini Bentley Kitty Hawk Bollard

FXBKH1Q & FXBKH2Q

SOFTLED • BOLLARD • PATHWAY LIGHTING



The FX Lighting FXBKH Bollard with choice of optics are designed to replace HID lighting systems up to 100w MH or HPS. These fixtures are ideal for retail centers, industrial parks, schools and universities, public transit and airports, office buildings and medical facilities.

HOUSING:

Extruded Aluminum Housing with Flush Mounting Base & Vandal-Resistant Screws. Fixture has Die Cast Aluminum Housing and Front Frame, Integral Heat Sinking and Driver Compartment. Nickel-Plated Stainless Steel Hardware.

LISTING & RATINGS:

CSA: Listed for Wet Locations, ANSI/UL 1598, 8750; IP66 Sealed LED Compartment.

FINISH:

Textured Architectural Bronze Powdercoat Finish Over a Chromate Conversion Coating. Custom Colors Available Upon Request.

LENS:

Tempered Clear Flat or SoftLED Flat Glass Lens

MOUNTING OPTIONS:

Mounting Kit with 8" Zinc-Plated Anchor Bolts, Included.

EASYLED LED:

Aluminum Boards

WATTAGE:

22w Array: 21.7w, System: 23.8w;
37w: Array: 37.2w, System: 43w;
44w Array: 43.4w, System: 47.6w;
74w: Array: 74.4w, System: 86w

DRIVER

Electronic Driver, 120-277V, 50/60Hz or 347-480V, 50/60Hz (37w Model Only); Less Than 20% THD and PF>0.90. Standard Internal Surge Protection is 2kV for 22w, 6kV for 37w. 0-10V Dimming Standard for a Dimming Range of 100% to 10%; Dimming Source Current is 150 Microamps.

CONTROLS:

Fixtures Ordered with Factory-Installed Motion Sensor Controls are Internally Wired for Switching and/or 1-10V Dimming Within the Housing. Remote Direct Wired Interface of 1-10V Dimming is Not Implied and May Not Be Available, Please Consult Factory. Fixtures are Tested with FX Lighting Controls and May Not Function Properly With Controls Supplied By Others. Fixtures are NOT Designed for Use with Line Voltage Dimmers.

LIFESPAN:

L70>320,000 Hours

WARRANTY:

5-Year Warranty for -40°C to +50°C Environment.

See Page 3 for Projected Lumen Maintenance Table.



Single Bollard
FXBKH1Q



Twin Bollard
FXBKH2Q

AVAILABLE OPTIONS:



Shown with "S5" Sensor



Shown with GFCI



PROJECT INFORMATION:

Project Name: _____ Fixture Type: _____

Complete Catalog #: _____ Date: _____

Comments: _____

FXLSolutions.com • (800) 533-2789 • info@FXLSolutions.com

EasyLED Mini Bentley Kitty Hawk Bollard

FXBKH1Q & FXBKH2Q

SOFTLED • BOLLARD • PATHWAY LIGHTING



We have custom and standard manufacturing options. Use this form to build your part number or reach out to our sales team for assistance.

GET YOUR PRODUCTS FASTER WITH OUR QUICK SHIP PROGRAM

Multiple USA locations = 98-3-1 Quick Ship Program

98% Fill Rate – 3 Day Lead Time – 1 Piece Minimum Order

ORDER EXAMPLE

| | | | | | | | | |
|----------------|----------|-------------|----------|-----------|----------|----------|-----------|-----------|
| FXBKH2Q | F | 2X37 | U | 5K | C | Z | 36 | SP |
| Series | Optics | Wattage | Driver | CCT | Lens | Color | Height | Options |

ORDER CONFIGURATION

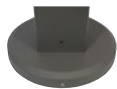
| Series | Optics | Wattage | Driver | CCT | Lens | Color | Height | Options |
|---|--|--|---|---|--|---|---|--|
| FXBKH1Q =EasyLED Mini Bentley Kitty Hawk Single Bollard | C =Type III/ NEMA 7H x 7V F =Type V/ NEMA 7H x 7V | 1X22 =22w 1X37 =37w 2X22 =44w 2X37 =74w | U =120-277V H =347-480V* | 3K =3000K* 4K =4000K 5K =5000K | C =Standard Clear Flat Glass Lens S =SoftLED Flat Glass Lens* | Z =Bronze C =Custom (Consult Factory) | (Leave Blank) = 48" Standard Height 36 =36" Height 30 =30" Height | SF =Single Fuse* DF =Double Fuse* SP =Surge Protection GF1 =GFCI Outlet, 15A, 120V SS =Internal Microwave Sensor* *120-277V Models Only. |
| FXBKH2Q =EasyLED Mini Bentley Kitty Hawk Twin Bollard | | | *37 & 74w Model Only. | *37w & 74w F Optic Only | *Type V Models Only | | | |

Mounting Accessories

(Order Separately, Field Installed)

| Options | Description |
|------------|---|
| FXBREBASE* | Bollard Retrofit Base Kit Adapts New Bollards to Most Existing Bolt Patterns. Fits all FX Lighting Bollards. Die Cast with Powdercoat Finish, Hardware Included. 1 1/2" Dia. x 1 1/2" H |

*Specify Color: Z=Bronze, B=Black, C=Custom (Consult Factory)



FXBREBASE*

*Shown Mounted

Accessories

(Order Separately, Field Installed)

| Options | Description |
|----------|--------------------------------------|
| FXP17126 | Remote Programming Tool for FXP17125 |



FXP17126

Replacement Parts

(Order Separately, Field Installed)

| Options | Description |
|------------|---|
| FXP17125 | Internal Microwave Sensor (120-277V Only) |
| FXKH15GL | Tempered Clear Flat Glass Lens. |
| FXKH15GLSS | SoftLED Flat Glass Lens |



FXP17125

FXLSolutions.com • (800) 533-2789 • info@FXLSolutions.com

EasyLED Mini Bentley Kitty Hawk Bollard

FXBKH1Q & FXBKH2Q

SOFTLED • BOLLARD • PATHWAY LIGHTING



FXBKH1Q PHOTOMETRIC DATA

| Wattage (Catalog Logic) | | 21.7W(1X22) | 37.2W (1X37) |
|--|------------|------------------|--------------|
| Input Watts | | 23.8W | 43W |
| Lumen Package | CCT | Delivered Lumens | |
| FXBKH1Q Clear Glass Type III Optic | 3000K | - | 4,351 |
| | 4000K | 2,681 | 4,508 |
| | 5000K | 2,875 | 4,834 |
| | BUG Rating | B1-U0-G1 | B1-U0-G1 |
| FXBKH1Q Clear Glass Type V Optic | 3000K | - | 4,150 |
| | 4000K | 2,557 | 4,300 |
| | 5000K | 2,742 | 4,611 |
| | BUG Rating | B1-U0-G0 | B2-U0-G0 |

FXBKH1Q & FXBKH2Q PROJECTED LUMEN MAINTENANCE

| Data shown for 5000 CCT | | Compare to MH | | | | |
|--------------------------------------|---|---------------|------------|------------|-------------|---------------------|
| TM-21-11 | Input Watts | Initial | 25,000 Hrs | 50,000 Hrs | 100,000 Hrs | Calculated LED Life |
| L70 Lumen Maintenance @ 25°C / 77°F | All wattages up to and including 43w | 1.00 | 0.98 | 0.95 | 0.91 | 320,000 |
| L70 Lumen Maintenance @ 50°C / 122°F | | 1.00 | 0.95 | 0.89 | 0.79 | 141,000 |
| L80 Lumen Maintenance @ 40°C / 104°F | | 1.00 | 0.96 | 0.93 | 0.85 | 134,000 |

NOTES:

1. Projected per IESNA TM-21-11. Data references the extrapolated performance projections for the base model in a 25°C ambient, based on 10,000 hours of LED testing per IESNA LM-80-08.
2. Compare to MH box indicates suggested Light Loss Factor (LLF) to be used when comparing to Metal Halide (MH) systems.

FXLSolutions.com • (800) 533-2789 • info@FXLSolutions.com

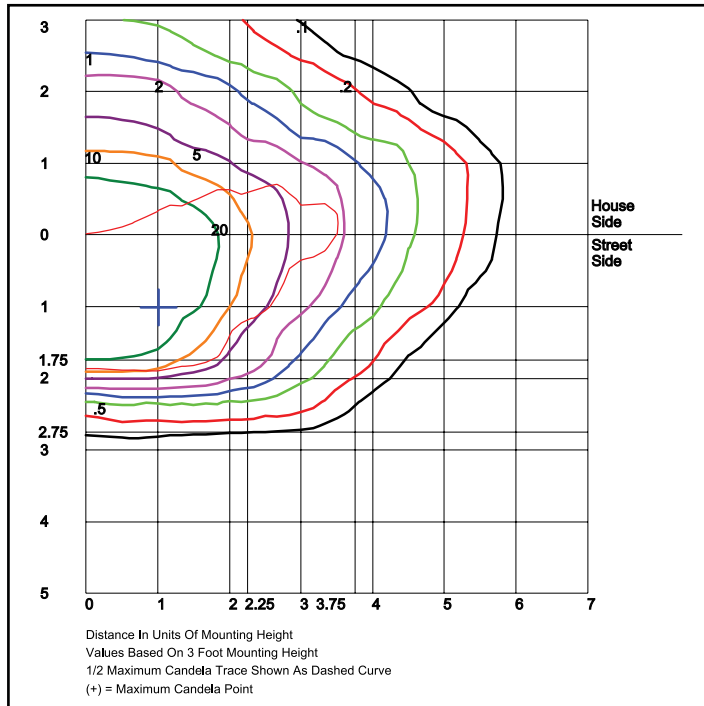
EasyLED Mini Bentley Kitty Hawk Bollard

FXBKH1Q & FXBKH2Q

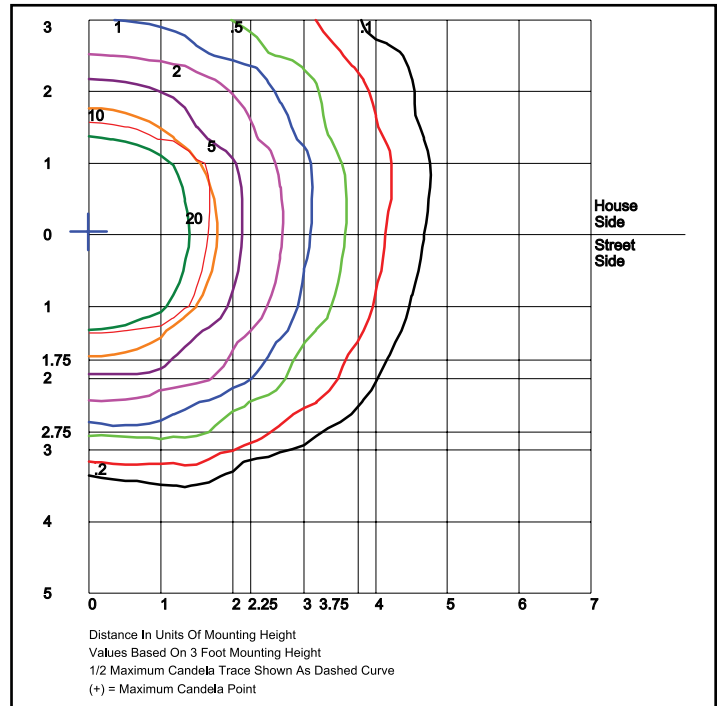
SOFTLED • BOLLARD • PATHWAY LIGHTING



FXBKH1Q DISTRIBUTION



FXBKH1QC1X37U5KC
Type III
Grid in feet, Mounting Height = 4 ft.



FXBKH1QF1X37U5KC
Type V
Grid in feet, Mounting Height = 4 ft.

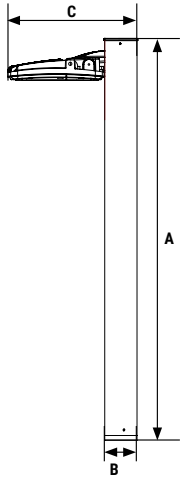
EasyLED Mini Bentley Kitty Hawk Bollard

FXBKH1Q & FXBKH2Q

SOFTLED • BOLLARD • PATHWAY LIGHTING

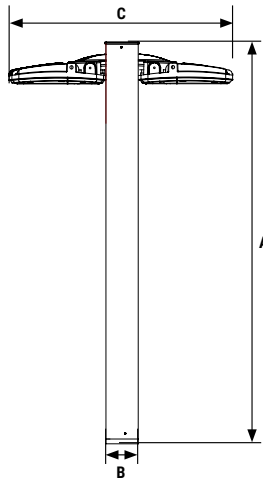


FXBKH1Q & FXBKH2Q DIMENSIONAL DATA



FXBKH1Q Single Bollard Dimensions

| | |
|-------------------------|-----------------------------|
| Width (C) | 15 $\frac{3}{4}$ " (398mm) |
| Length ² (B) | 4 $\frac{3}{4}$ " (120mm) |
| Height (A) | 48 $\frac{3}{4}$ " (1236mm) |



FXBKH2Q Twin Bollard Dimensions

| | |
|-------------------------|-----------------------------|
| Width (C) | 15 $\frac{3}{4}$ " (398mm) |
| Length ² (B) | 4 $\frac{3}{4}$ " (120mm) |
| Height (A) | 48 $\frac{3}{4}$ " (1236mm) |

FXLSolutions.com • (800) 533-2789 • info@FXLSolutions.com

Information provided is subject to change. Please verify all details with FX Lighting. All values are designed to standard industry values when measured under laboratory conditions, and FX Lighting makes no warranty or guarantee, expressed or implied, that such performance will be obtained under end-use conditions.