

EasyLED 24" Linear LED Die Cast FXLV2AQ



SOFTLED • HARSH ENVIRONMENTS • LINEAR LED

The FXLV2A series wall, pendant and ceiling mount luminaire is available with clear or LumaLens lenses and open door frame designed to replace HID lighting systems from 175w to 250w MH or HPS. Typical lighting applications include retail centers, industrial parks, schools and universities, public transit and airports, office buildings and medical facilities. Mounting heights of 12 to 25 feet can be used based on light level and uniformity requirements.

HOUSING:

Heavy-Duty Die Cast Aluminum Housing and Top Frame. Can Be Tapped for Side Conduit Entry.

LISTING & RATINGS:

ETL: Listed for Wet Locations, ANSI/UL 1598, 8750. Note: If using the Quick-Mount Bracket, the power feed must be made at the drill point locations on the sides of the fixture, not through the Bracket to maintain the Wet Locations listing. IP66 Sealed LED Compartment.

FINISH:

Platinum Powdercoat Finish Over a Chromate Conversion Coating. Custom Colors Available Upon Request.

LENS:

Clear UV-Stabilized Polycarbonate or SoftLED LumaLens Opal UV-Stabilized Polycarbonate Vandal-Resistant Lens

MOUNTING OPTIONS:

Surface Mount or Use Optional Stainless Steel Quick-Mount Bracket, Adjustable Bracket, or Yoke.

EASYLED LED:

Aluminum Boards

WATTAGE:

47w: Array: 47w, System: 57.8w; (175w HID Equivalent)
66w: Array: 66w, System: 77.3w; (250w HID Equivalent)

DRIVER:

Electronic Driver, 120-277V, 50/60Hz or 347-480V, 50/60Hz; Less Than 20% THD and PF>0.90. Standard Internal Surge Protection 6kV. 0-10V Dimming Standard for a Dimming Range of 100% to 10%; Dimming Source Current is 150 Microamps.

CONTROLS:

Fixtures Ordered with Factory-Installed Motion Sensor Controls are Internally Wired for Switching and/or 1-10V Dimming Within the Housing. Remote Direct Wired Interface of 1-10V Dimming is Not Implied and May Not Be Available, Please Consult Factory. Fixtures are Tested with FX Lighting Controls and May Not Function Properly With Controls Supplied by Others. Fixtures are NOT Designed for Use with Line Voltage Dimmers.

LIFESPAN:

L70>138,000 Hours

WARRANTY:

5-Year Warranty for -40°C to +50°C Environment.

See Page 3 for Projected Lumen Maintenance Table.



Shown with LumaLens



PROJECT INFORMATION:	
Project Name:	Fixture Type:
Complete Catalog #:	Date:
Comments:	

FXLSolutions.com • (800) 533-2789 • info@FXLSolutions.com

EasyLED 24" Linear LED Die Cast FXLV2AQ



SOFTLED • HARSH ENVIRONMENTS • LINEAR LED

We have custom and standard manufacturing options. Use this form to build your part number or reach out to our sales team for assistance.

GET YOUR PRODUCTS FASTER WITH OUR QUICK SHIP PROGRAM

Multiple USA locations = 98-3-1 Quick Ship Program
98% Fill Rate – 3 Day Lead Time – 1 Piece Minimum Order

ORDER EXAMPLE

FXL2VA0Q
Series
F
Optics
66
Wattage
U
Driver
5K
CCT
C
Lens
P
Color
SP
Options

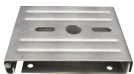
ORDER CONFIGURATION

Series	Optics	Wattage	Driver	CCT	Lens	Color	Color
FXLV2AQ=EasyLED Open Frame 24" Linear LED Die Cast	F=Wide	47=47w 66=66w	U=120-277V H=347-480V	4K=4000K 5K=5000K	C=Clear UV-Stabilized Polycarbonate Vandal-Resistant Lens L=SoftLED LumaLens Opal UV-Stabilized Polycarbonate Vandal-Resistant Lens	P=Platinum C=Custom (Consult Factory)	SF=Single Fuse* DF=Double Fuse* SP=Surge Protection S5=Microwave Sensor with Dimming for Mounting Heights of 8' to 26'* BU=Battery Backup* BUC=Cold Start Battery Backup, -20°C, 90 Minutes* *120-277V Models Only.
FXLV2AQQ	F						

Mounting Accessories

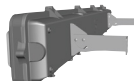
(Order Separately, Field Installed)

Options	Description
FXLVAQM	Stainless Steel Quick Mount Bracket. Requires Two Brackets Per Fixture. Note: The power feed must be made at the drill point locations on the sides of the fixture, not through the Bracket, to maintain the Wet Locations listing.
FXLVABRSS	Stainless Steel Adjustable Bracket, Set of Two
FXLV2AYSS	Stainless Steel Yokes for FXLV2A, Includes Hardware.



FXLVAQM

*Shown Mounted



FXLVABRSS*



FXLV1AYSS*

Accessories

(Order Separately, Field Installed)

Options	Description
FXP17126	Remote Programming Tool for FXP17125



FXP17126

Replacement Parts

(Order Separately, Field Installed)

Options	Description
FXLV2ALL	SoftLED LumaLens Opal UV-Stabilized Polycarbonate Vandal-Resistant Lens
FXLV2APC	Clear UV-Stabilized Polycarbonate Vandal-Resistant Lens
FXP17125	Internal Microwave Sensor with Dimming for Mounting Heights of 8 to 26'. 120-277VAC, 50/60Hz

For Replacement Battery Backup, see the FX Lighting LED Battery Backup Specification Sheet.



FXP17125

FXLSolutions.com • (800) 533-2789 • info@FXLSolutions.com

EasyLED 24" Linear LED Die Cast FXLV2AQ



SOFTLED • HARSH ENVIRONMENTS • LINEAR LED

FXLV2AQ PHOTOMETRIC DATA

		Wattage (Catalog Logic)		47W (47)	66W (1X66)
		Input Watts		57.8W	77.3W
Lumen Package	Optic	CCT	Spacing Criteria	Delivered Lumens	
FXLV2AQ (Clear Lens)	Open Frame (110° x 110°)	4000K	1.22	7,017	9,882
		5000K	1.22	7,309	10,294
FXLV2AQ (LumaLens)	Open Frame (110° x 130°)	4000K	1.30	5,695	8,021
		5000K	1.30	5,932	8,356

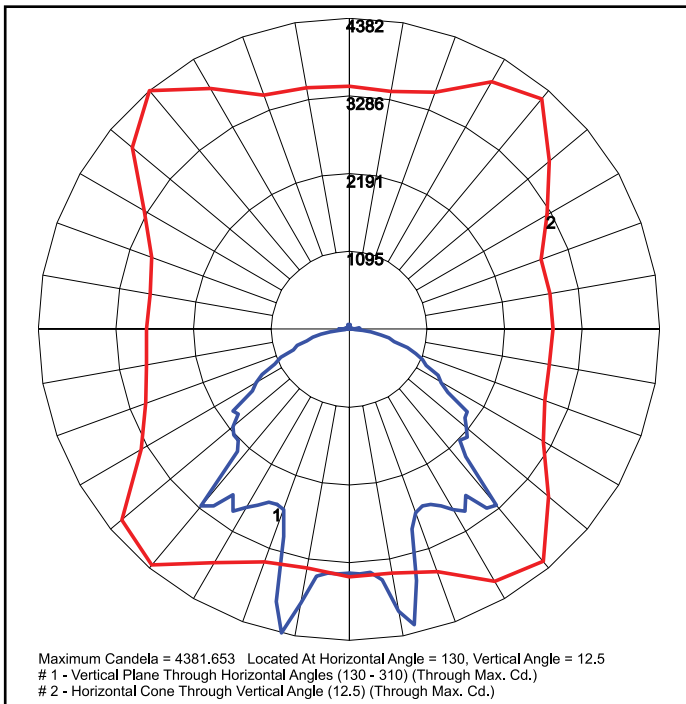
FXLV2AQ PROJECTED LUMEN MAINTENANCE

Data shown for 5000 CCT			Compare to MH			
TM-21-11	Input Watts	Initial	25,000 Hrs	50,000 Hrs	100,000 Hrs	Calculated LED Life
L70 Lumen Maintenance @ 25°C / 77°F	All wattages up to and including 77w	1.00	0.95	0.89	0.78	138,000
L70 Lumen Maintenance @ 50°C / 122°F		1.00	0.86	0.72	0.43	53,000
L80 Lumen Maintenance @ 40°C / 104°F		1.00	0.92	0.84	0.68	62,000

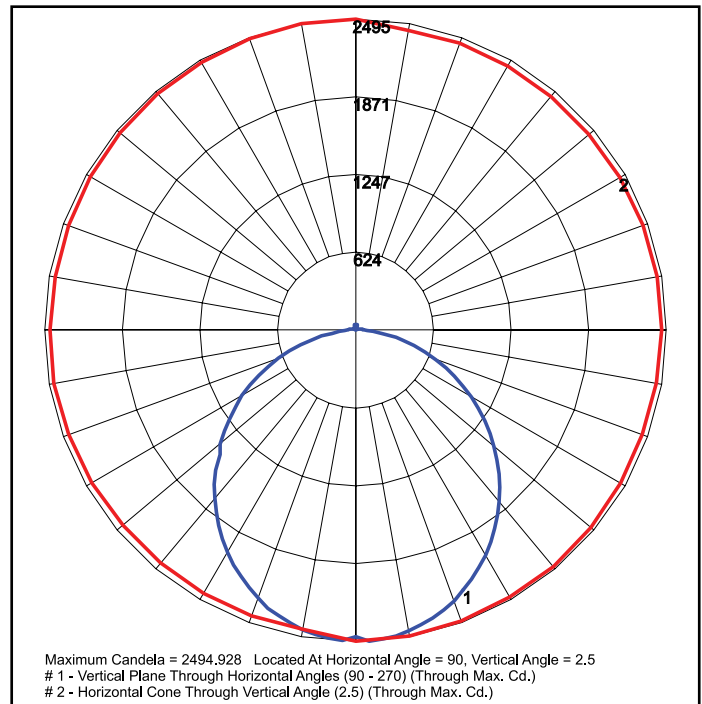
NOTES:

- Projected per IESNA TM-21-11. Data references the extrapolated performance projections for the base model in a 25°C ambient, based on 10,000 hours of LED testing per IESNA LM-80-08.
- Compare to MH box indicates suggested Light Loss Factor (LLF) to be used when comparing to Metal Halide (MH) systems.

FXLV2AQ DISTRIBUTION



FXLV2AQ00F66U5KC
Wide Optic



FXLV2AQ00F66U5KL
Wide Optic

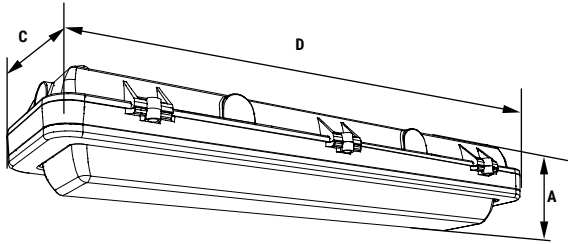
FXLSolutions.com • (800) 533-2789 • info@FXLSolutions.com

EasyLED 24" Linear LED Die Cast FXLV2AQ



SOFTLED • HARSH ENVIRONMENTS • LINEAR LED

FXLV2AQ DIMENSIONAL DATA



Dimensions

Width (D)	24 $\frac{1}{2}$ " (614mm)
Length (C)	7" (178mm)
Height (A)	4" (102mm)

FXLSolutions.com • (800) 533-2789 • info@FXLSolutions.com

Information provided is subject to change. Please verify all details with FX Lighting. All values are designed to standard industry values when measured under laboratory conditions, and FX Lighting makes no warranty or guarantee, expressed or implied, that such performance will be obtained under end-use conditions.